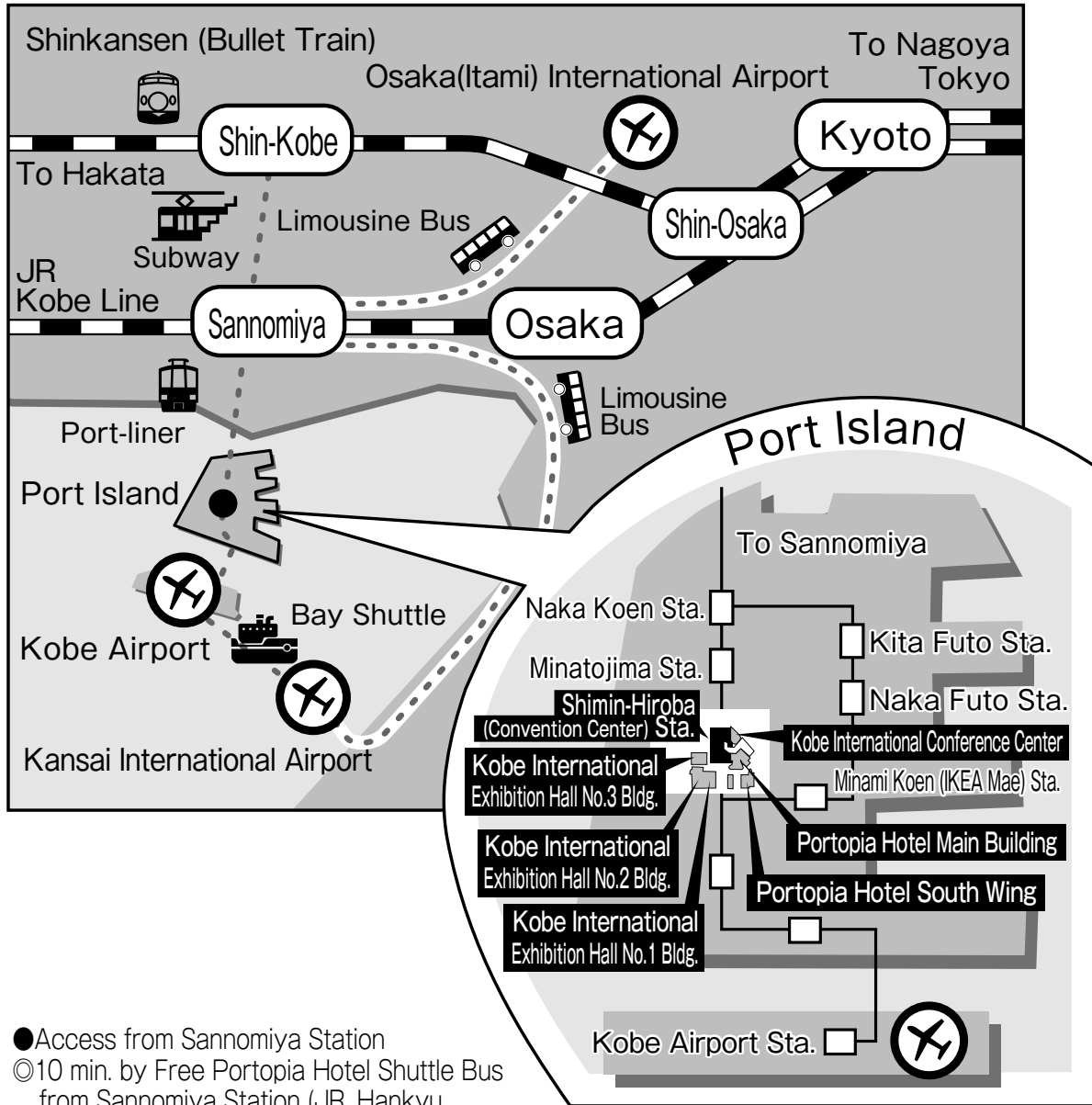


ACCESS INFORMATION

APDW 2016



- Access from Sannomiya Station
 - 10 min. by Free Portopia Hotel Shuttle Bus from Sannomiya Station (JR, Hankyu, Hanshin and Subway Line)
 - 10 min. by Port-Liner from Sannomiya Station (JR, Hankyu, Hanshin and Subway Line) to the Shimin-Hiroba (Convention Center) Station and one minute on foot
 - 10 min. by taxi from Sannomiya Station (JR, Hankyu, Hanshin and Subway Line) : About ¥1,500
- Access from Shin-Kobe Station
 - 2 min. by Subway from Shin-Kobe Station to Sannomiya Station and 10 min. by Port-Liner to the Shimin-Hiroba (Convention Center) Station
 - 20 min. by taxi from Shin-Kobe Station: About ¥2,500

- Access from Kobe Airport
 - 8 min. by Port-liner from Kobe Airport to the Shimin-Hiroba (Convention Center) Station and one minute on foot
 - 10 min. by taxi from Kobe Airport : About ¥1,500
- Access from Kansai International Airport
 - 70 min. by Limousine Bus to Sannomiya Station
 - 30 min. by Kobe Bay Shuttle to Kobe Airport
- Access from Osaka (Itami) International Airport
 - 40 min. by Limousine Bus to Sannomiya Station



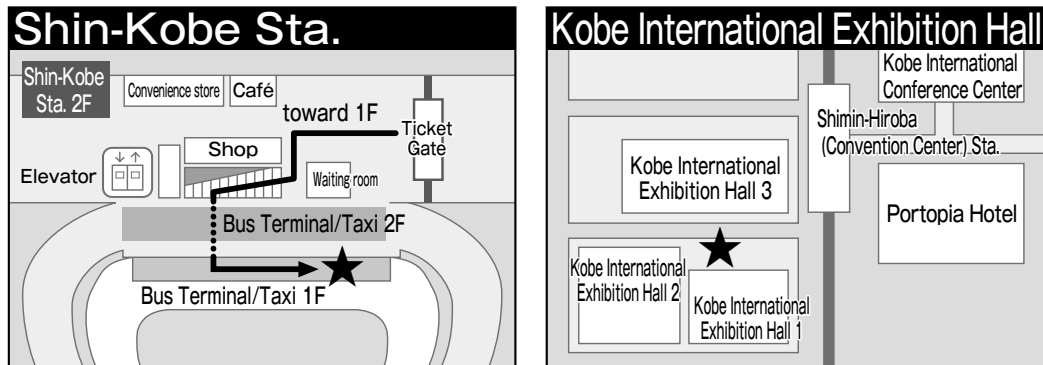
Shuttle Bus Information (Free of Charge)

Route1: Shin-Kobe Sta. \longleftrightarrow Kobe International Exhibition Hall
(30-45 minutes by bus)

A special shuttle bus from Shin-Kobe Sta. to Kobe International Exhibition Hall will be operated during the Congress period. (free of charge)

Running Times: November 3 (Thu.) - 5 (Sat.)
every 20 minutes from 7:00 till 18:00
※November 6 (Sun.)
Only during the following times
7:15~9:00, 16:40~18:00

Bus stop

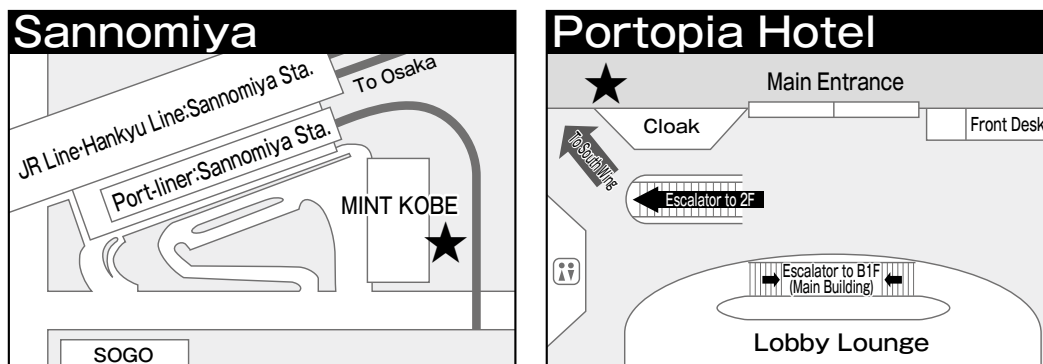


Route2: Sannomiya \longleftrightarrow Kobe Portopia Hotel
(10-15 minutes by bus)

During the period of JDDW, a complementary shuttle bus service will be provided between Sannomiya and Portopia Hotel, according to demand.

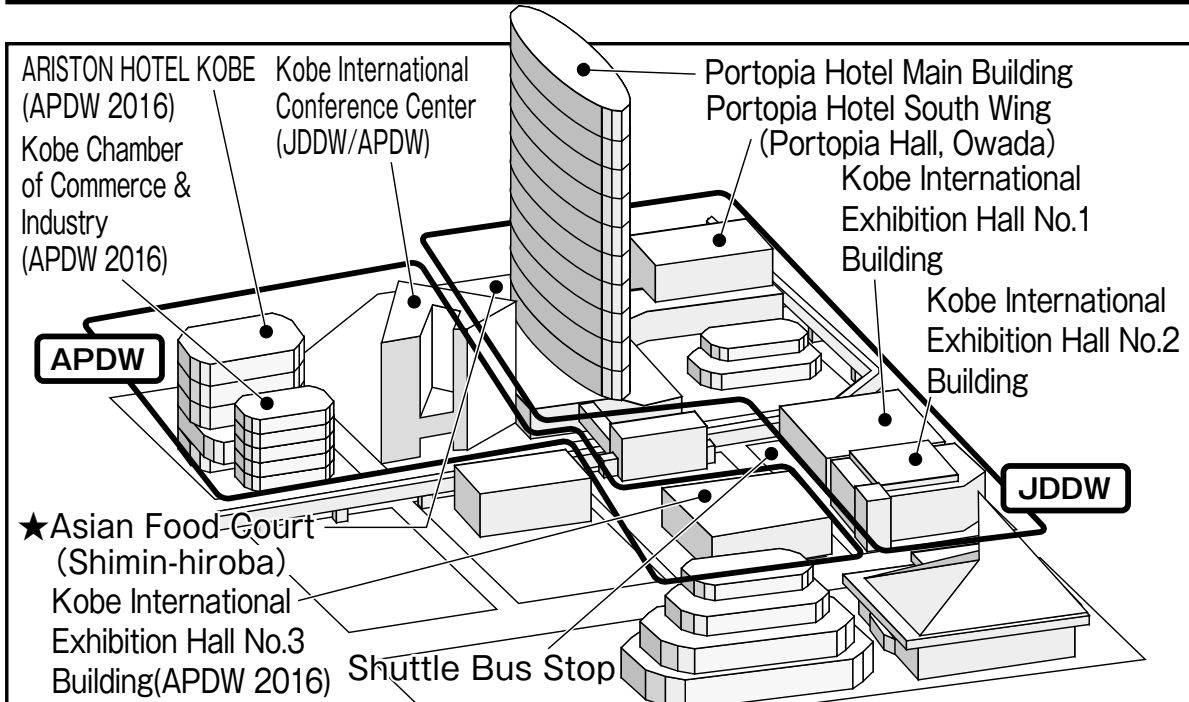
Running Times: November 3 (Thu.) - 6 (Sun.)
every 20 minutes from 7:00 till 21:50

Bus stop



Furthermore, the regular shuttle bus is available other than the special ones. (the shuttle bus between Shin-Kobe ~ Sannomiya ~ Portopia Hotel will be operated on November 2 as well)

AREA MAP



[APDW 2016 Venues]

Kobe International Conference Center

- Room 1: Main Hall (1F)
- Room 2: International Conference Room (3F)
- Prayers' Room: Room 303 (3F)
- APDW 2016 Headquarter: Room 305 (3F)
- Speakers' Ready Room: Reception Hall (3F)
- Coffee Break: Reception Hall (3F)
- Room 3: Room 401+402 (4F)
- Hospitality Room (Boston Scientific): Room 405 (4F)
- Hospitality Room (FUJIFILM): Room 406 (4F)
- Hands-on Seminar Endoscopy: Room 501+502 (5F)
 - * For pre-registrants only
 - * On November 2 and 3
- Hands-on Seminar High-resolution Manometry: Room 503 (5F)
 - * For pre-registrants only
 - * On November 2
- Hands-on Seminar Basic Science: Room 503 (5F)
 - * For pre-registrants only
 - * On November 3 and 4
- Hands-on Seminar Ultrasound: Room 504+505 (5F)
 - * For pre-registrants only
 - * On November 3 and 4

Kobe Chamber of Commerce and Industry

- Event Hall (2F)
 - * Room for Business Meeting
 - * Room for Surgery-L1, Surgery-S1, and Free Paper "Surgery 1"
- Room 4: Shinsho Hall A (3F)
- Room 5: Shinsho Hall B (3F)
- Room 6: Meeting Room 1+2 (3F)
- Hands-on Seminar Clinical Science
 - * For pre-registrants only
 - * On November 3
- Room 7: Meeting Room 3 (3F)
- APDW Headquarter: Boardrooms (3F)
- APDW 2016 Headquarter: Special Meeting Room A (3F)
- Speaker's Ready Room: Foyer (3F)
- Coffee Break: Foyer (3F)

ARISTON HOTEL KOBE

- Room 8: Valencia (2F)
- Room 9: Barcelona (16F)

Kobe International Exhibition Hall No. 3 Building

- General Information (1F)
- Registration Desk (1F)
- Congress Bag Distribution (1F)
- Free Port Liner Ticket Distribution (1F)
- Digital Poster Presentations (1F)
- Digital Poster Viewing Area (1F)
- Commercial Exhibition (1F)

Kobe Portopia Hotel South Wing

- Portopia Hall: Opening Ceremony, Kobe, Hyogo (1F)
 - * November 2
- Owada: Welcome Reception (1F)
 - * November 2

Tea Ceremony

(Portopia Hotel South Wing (B1) Nov.3rd to 5th 1:30pm to 4:30pm. Please experience traditional Japanese Green Tea.

★Asian Food Court

Asian Food Court and Omatsuri Plaza is available from Nov.3rd to 5th 1:30pm to 5:30pm. Please enjoy foods, beverages, and Japanese traditional games.

[JDDW 2016 Venues]

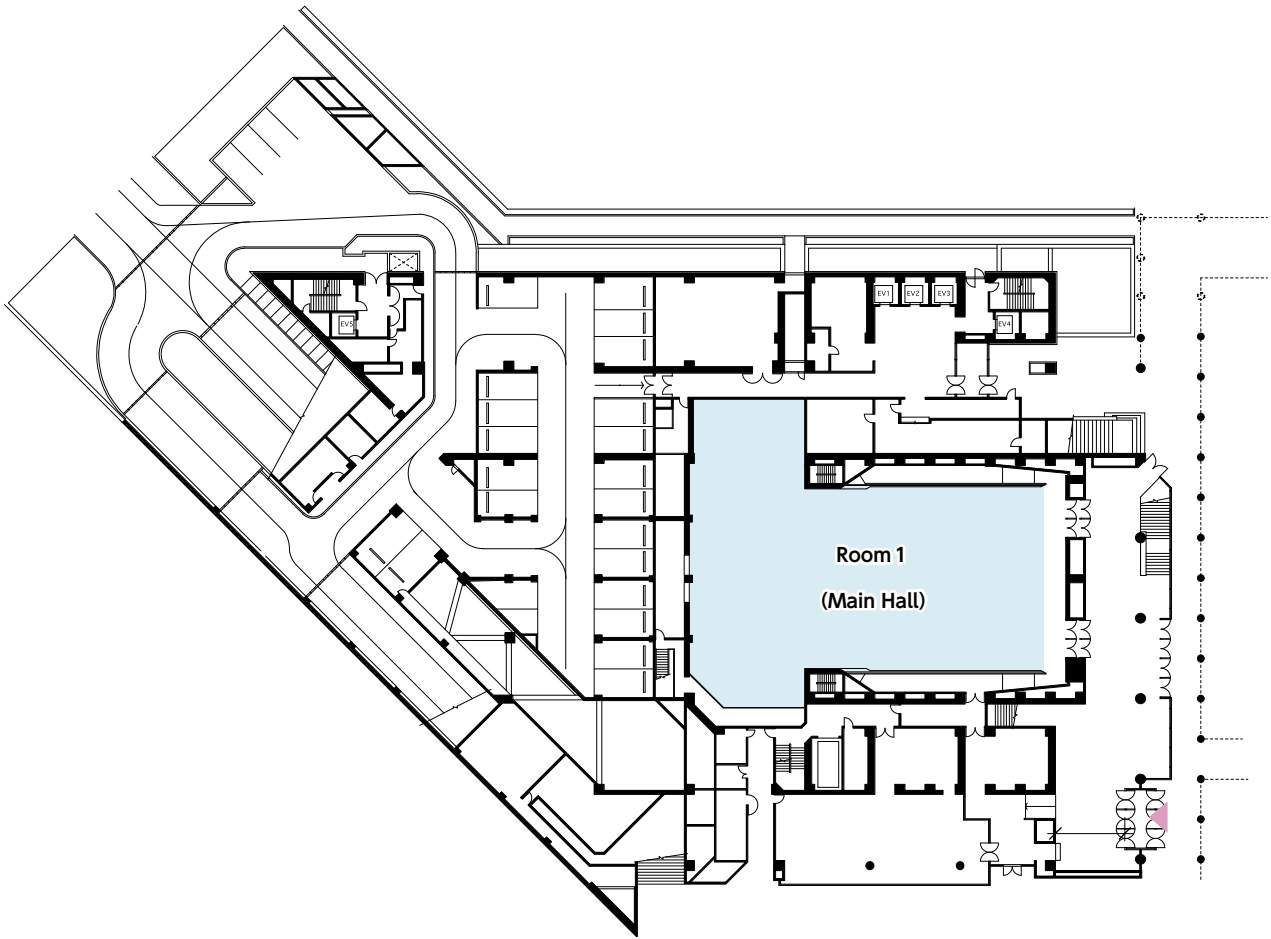
Kobe Portopia Hotel

Kobe International Exhibition Hall, No. 1 Building

Kobe International Exhibition Hall, No. 2 Building

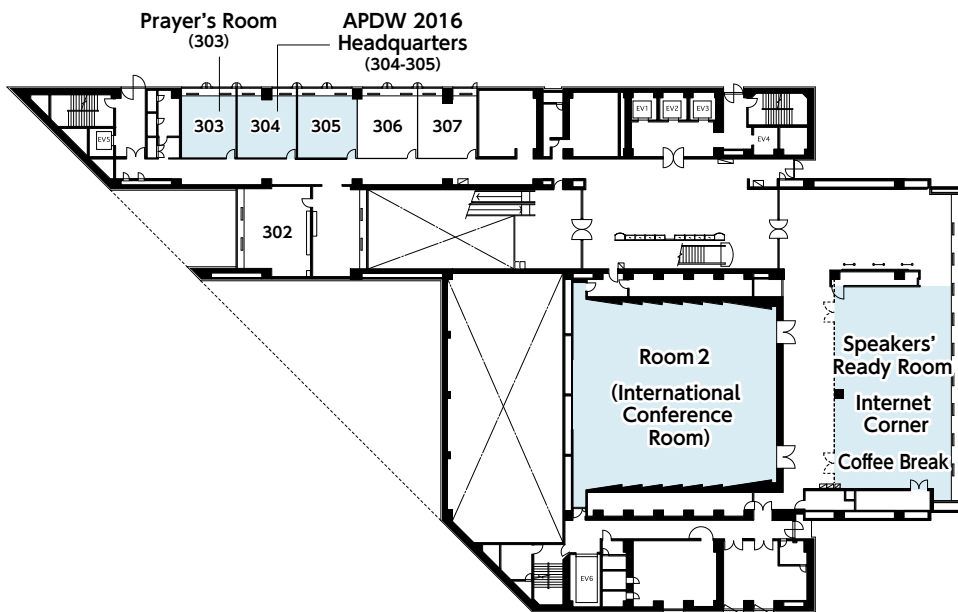


Kobe International Conference Center, 1st floor

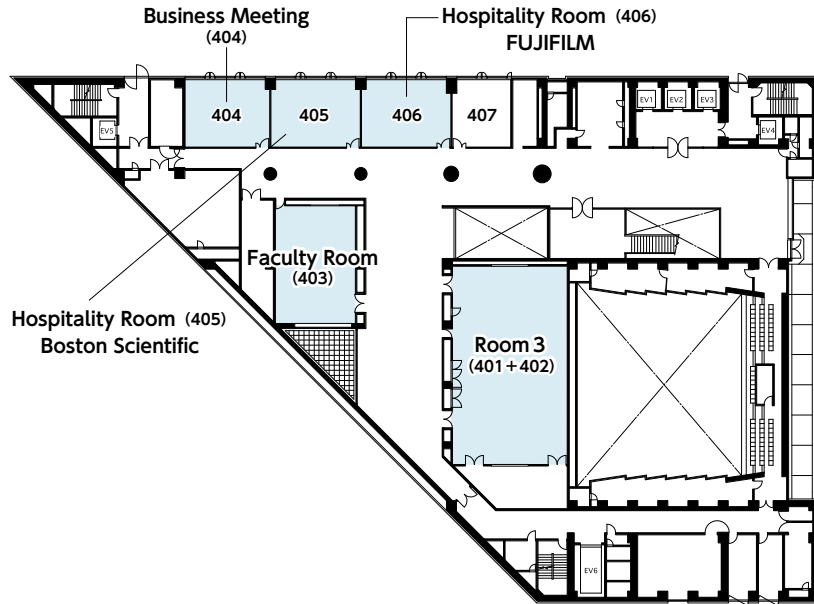


APDW 2016

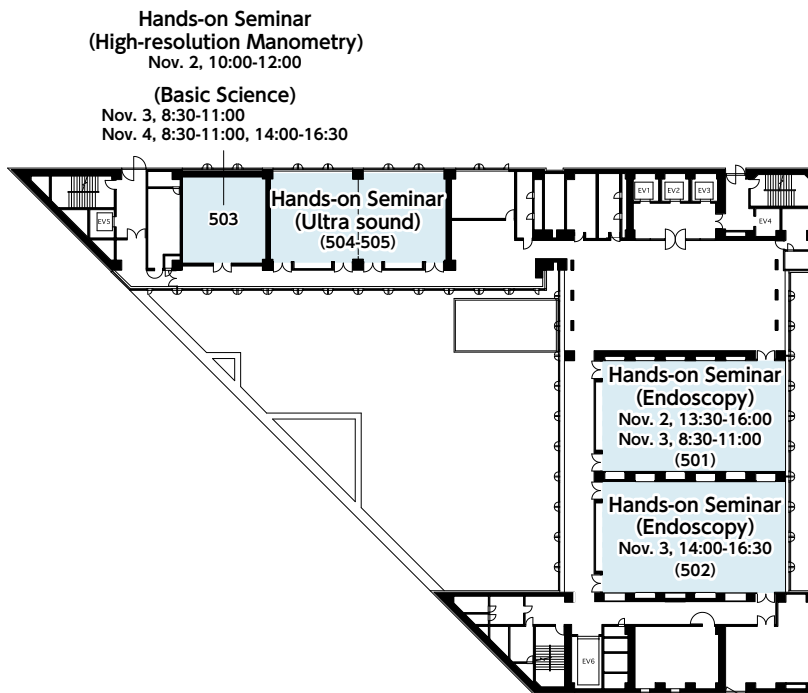
Kobe International Conference Center, 3rd floor



Kobe International Conference Center, 4th floor

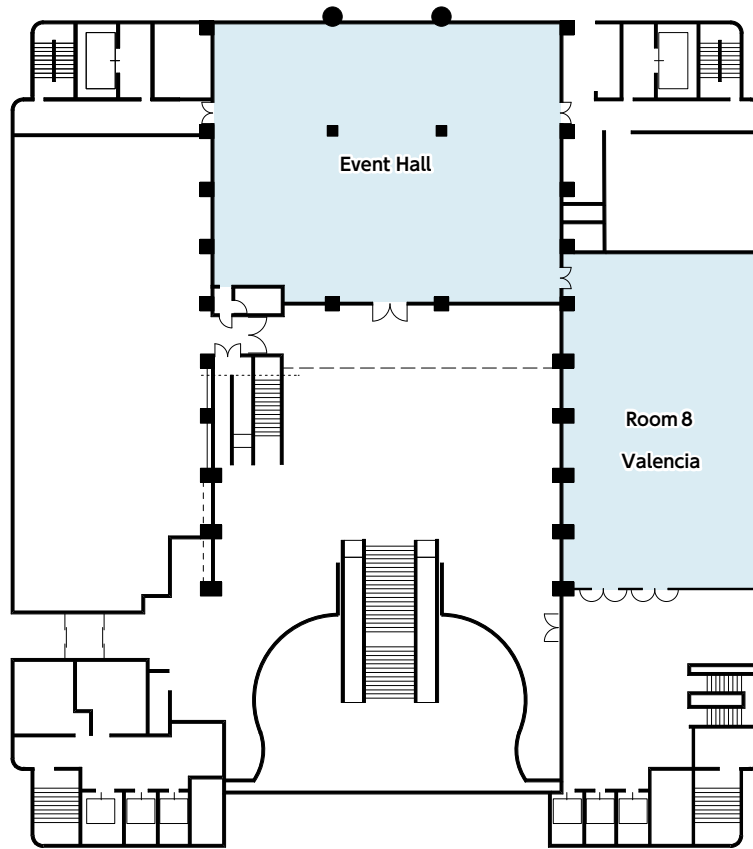


Kobe International Conference Center, 5th floor



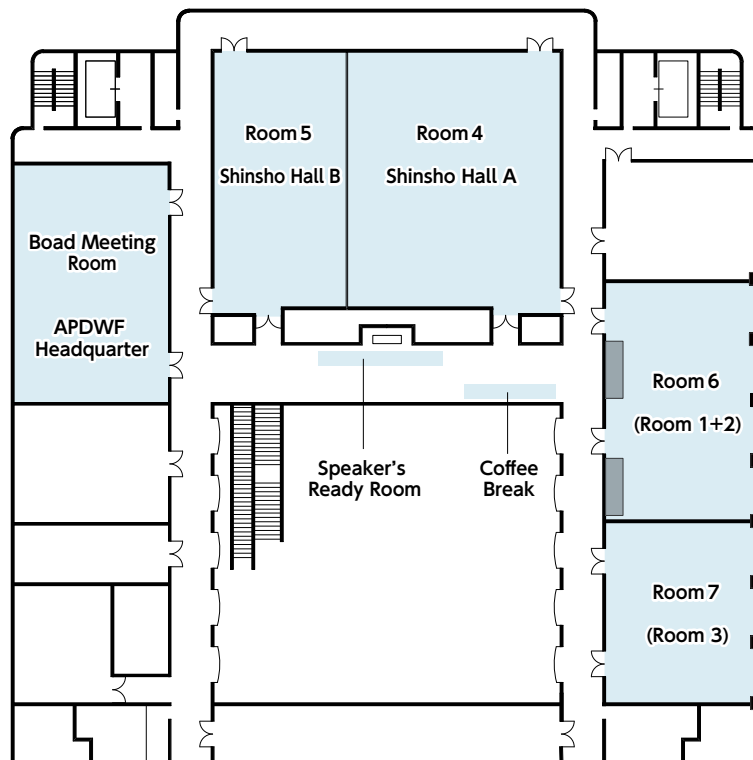


Kobe Chamber of Commerce and Industry, 2nd floor/ARISTON HOTEL KOBE, 2nd floor

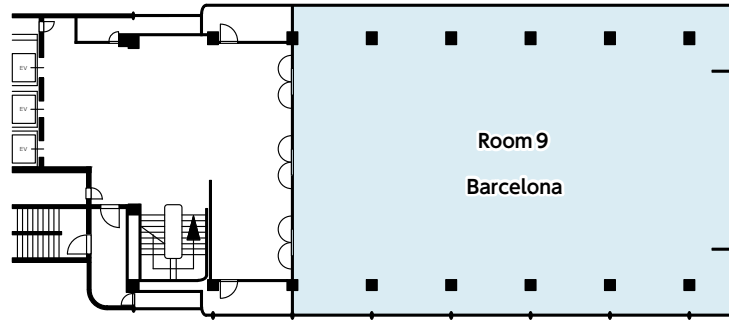


APDWF 2016

Kobe Chamber of Commerce and Industry, 3rd floor



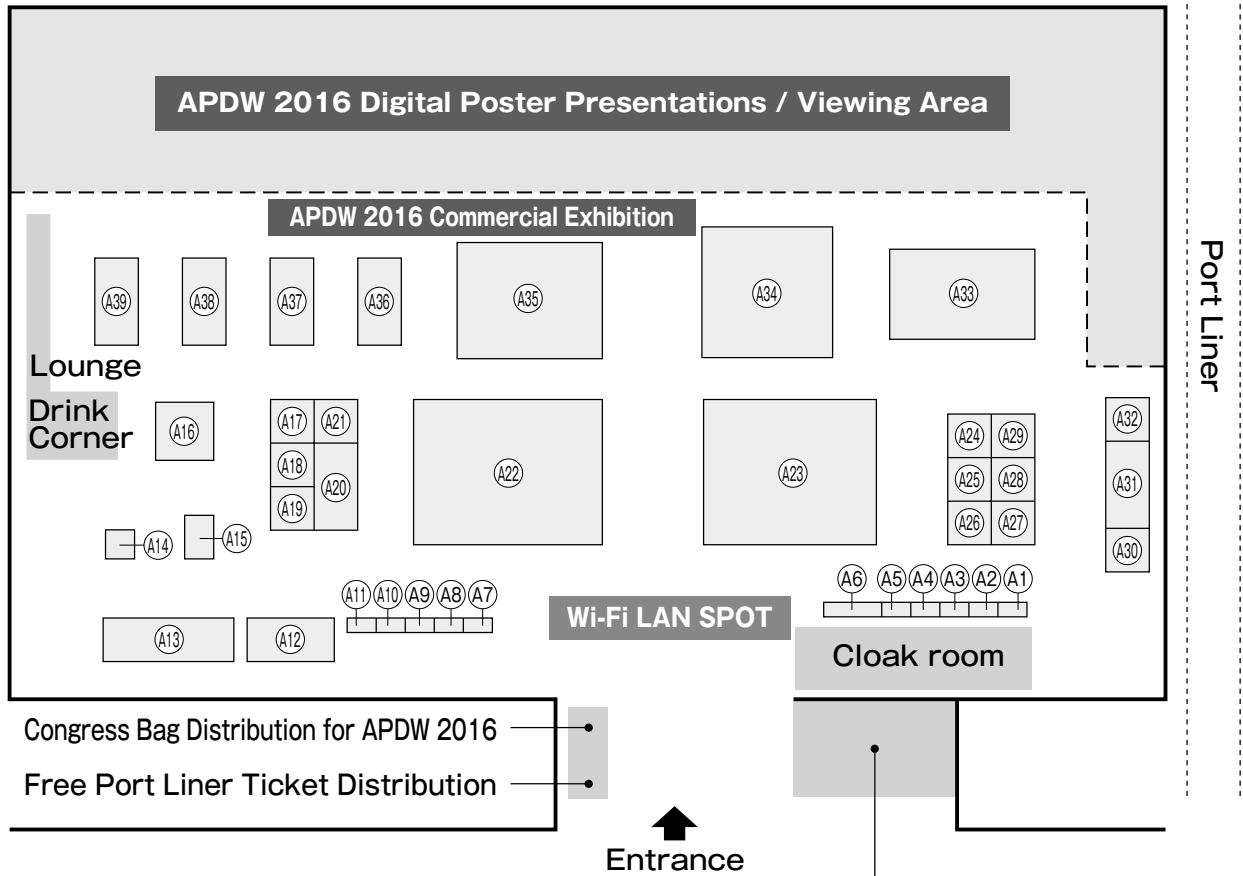
ARISTON HOTEL KOBE, 16th floor





Kobe International Exhibition Hall No. 3 Building, 1st Floor

APDW 2016



Congress Bag Distribution for APDW 2016
Free Port Liner Ticket Distribution

Entrance

A1	SANDHILL SCIENTIFIC
A2	FIS Inc.
A3	Pfizer Japan Inc.
A4	PIOLAX MEDICAL DEVICES, INC.
A5	KOKEN CO., LTD.
A6	Essen BioScience K.K.
A7	WGO
A8	JDDW 2017
A9	APDW 2017
A10	APASL 2017
A11	UEG
A12	Medtronic, Inc.
A13	Mylan N.V.
A14	DNA Genotek
A15	Next Biomedical Co., Ltd.
A16	KARL STORZ GmbH & Co. KG
A17	Hangzhou AGS MedTech Co., Ltd.

A18	BIOGAIA AB
A19	LABORIE (MMS)
A20	Cantel Medical Asia/Pacific. Pte. Ltd.
A21	Shenzhen Zhonghe Headway Bio-Sci & Tech Co., Ltd
A22	Olympus Corporation
A23	FUJIFILM Corporation
A24	Leo Medical Co., Ltd.
A25	Taewoong Medical
A26	Systemex Corporation
A27	US Endoscopy
A28	MTW-Endoskopie W. Haag KG
A29	EW Nutrition Japan K.K.
A30	Otsuka Pharmaceutical Co., Ltd. / NAGASE & CO., LTD.
A31	Micro-Tech (Nanjing) Co., Ltd.
A32	Illumina K.K.
A33	PENTAX MEDICAL SINGAPORE PTE. LTD.
A34	Takeda Pharmaceuticals International AG

Registration Desk for APDW 2016
7:30~17:30
※Nov.1: 15:00~17:30
※Nov.5: 7:30~17:00

Notice: Wifi LAN spot
You can access to the internet through a free wireless LAN in the following places:
Kobe International Conference Center
Kobe International Exhibition Hall, No. 3 Building (1F)
SSID: apdw2016 PW: 2016kobe

A35	Boston Scientific
A36	BIOCODEX
A37	COOK MEDICAL
A38	EndoChoice GmbH
A39	Erbe Elektromedizin GmbH